

# CFL Series

CFL MEDIUM

Rev. Date: 16 February 2021

## Product Description

The CFL Series Floodlight provides general area lighting and improve the overall look of façades and signage.

The slim, low profile design adds architectural appeal to any general flood lighting application with crisp uniform white light that offer high performance maximizing energy savings. With remarkable light quality and smooth white light, buildings and signage will stand out in the crowd.

**Applications:** : Industry, parking lots, monuments and general area spaces.

## Performance Summary

**Efficacy:** up to 135 lm/W

**Lumen Output:** 10800 - 21000 lm

**IP Rating:** IP66

**Limited Warranty:** 5 years

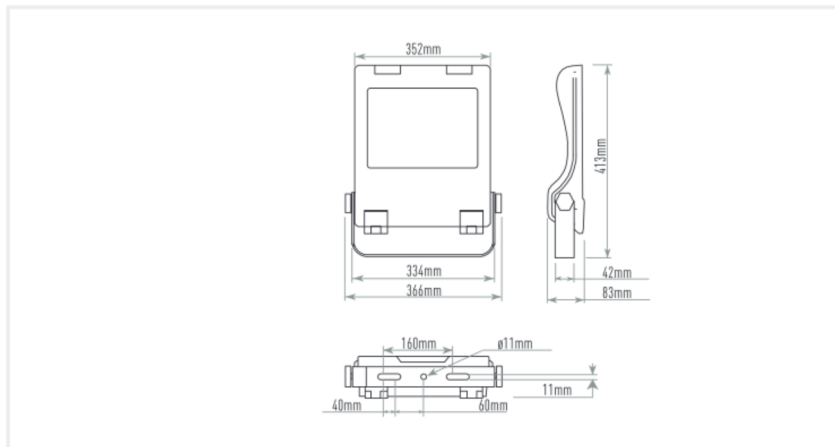


## Ordering Information

EX: CFL-B-ASM-E-40K-+-24-BK-FX-01

CFL	B	ASM	C	40K	+	24	BK	FX	01
Product	Version	Optic	Input Power	CCT	Insulation Class	Voltage	Finish	Control Option	Cable Length
CFL CFL Medium	- B	ASM Asymmetric	- C 100W	- 40K	- Class 1	- 24 220-240V	- BK Black	- FX Fixed Output	- 01 Exit cable 1,5 m
		WFL Wide Flood	D 150W	30K*				DL DALI	
		30 Flood 30°						VM Virtual Midnight	
		15 Spot 15°							
		275 Type II short							

\* (On request for MOQ)



www.creelighting-europe.com Ph. +39 055 343081

**CREE LIGHTING**

**FEATURES**

- Efficacy: up to 135 lm/W
- Lumen Output: 10800 - 21000 Lm
- Tool-less entry through buckles integrated
- Lifetime: L80F10 Up to >180Khrs Ta=25°C (>180Khrs L80 IESNA TM-21)
- Operative temperature -30°C up to 40°C
- Input Voltage: 220-240V, 50/60Hz
- Power factor: Up to > 0.92 at full load
- Surge protection: 10kV CM / 6kV DM surge immunity according to EN 61000-4-5 and EN 61547
- Enclosure rated IP66 per IEC 60529
- Impact resistance IK08
- Control Option: Fixed Output, Dali, Virtual Midnight

**CONSTRUCTION AND MATERIALS**

- Die cast aluminum housing treated with electrophoresis and powder coating for strong anti-corrosion performance.
- Extra clear silk printed tempered glass
- Bracket surface featuring hot galvanizing processing, providing strong corrosion resistance.
- Tool free adjustable bracket +/-90° by means of mechanical locking with graduated scale of 10°
- Vent integrated to prevent moisture and balance atmosphere pressure

**WARRANTY AND CERTIFICATIONS**

- Limited Warranty: 5 years
- CE Mark / RoHs Compliant / ENEC mark / CB mark
- Risk group exempt in accordance with Standard CEI EN62471 for photobiological safety (Tested IEC/TR62778)
- Compliant to: EN 60598-1; EN 60598-2-3, EN 60598-2-5

**ELECTRICAL DATA\***

Input Power Designator	System Watts	Total Current	Power Factor
		@230V, 50Hz	
C	100W	0.43 A	0,92
D	150W	0.64A	0,92

\* Electrical data at 25°C (77°F)

**PRODUCT WEIGHT T AND MAXIMUM WIND AREA**

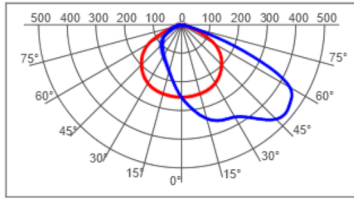
Weight	Lateral Surface Wind Exposed
6.8 kg	0.14m <sup>2</sup>



**Photometry**

All published luminaire photometric testing performed to IESNA LM-79-08 standards by an external laboratory. To obtain an IES file specific to your project consult: [www.creelighting-europe.com](http://www.creelighting-europe.com).

**ASM - ASYMMETRIC**



cd/klm  
 C0 C180 C90 C270 C90 C270

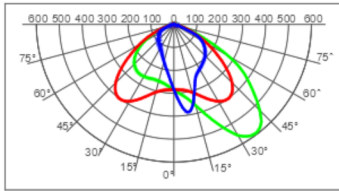


Lux  
 CFL-B-ASM-D-40K\_150-F01602  
 Mounting Height: 8m

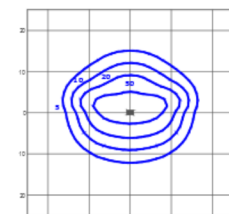
LUMEN OUTPUT - ASM	
Input Power Designator	4000K
	Initial Delivered Lumens*
C	14550
D	21796

\* Initial delivered lumens at 25°C (77°F). Actual production yield may vary between -4 and +10% of initial delivered lumens

**WFL - WIDE FLOOD**



cd/klm  
 C0 C180 C90 C270 C18 C196

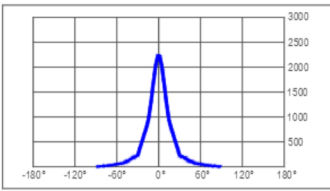


Lux  
 CFL-B-WFL-D-40K\_150-F00801  
 Mounting Height: 8m

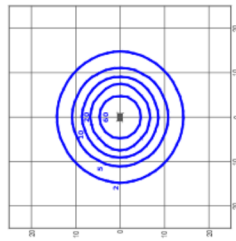
LUMEN OUTPUT - WFL	
Input Power Designator	4000K
	Initial Delivered Lumens*
C	14064
D	21086

\* Initial delivered lumens at 25°C (77°F). Actual production yield may vary between -4 and +10% of initial delivered lumens

**30° - FLOOD 30°**



cd/klm  
 C90 - C270

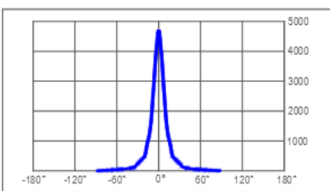


Lux  
 CFL-B-30-D-40K\_150-F01604  
 Mounting Height: 8m

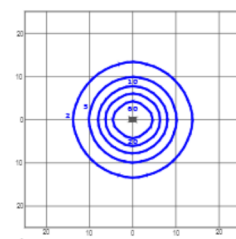
LUMEN OUTPUT - 30°	
Input Power Designator	4000K
	Initial Delivered Lumens*
C	14498
D	21914

\* Initial delivered lumens at 25°C (77°F). Actual production yield may vary between -4 and +10% of initial delivered lumens

**15° - FLOOD 15°**



cd/klm  
 C90 - C270



Lux  
 CFL-B-15-D-40K\_150-F01603  
 Mounting Height: 8m

LUMEN OUTPUT - 15°	
Input Power Designator	4000K
	Initial Delivered Lumens*
C	14644
D	21954

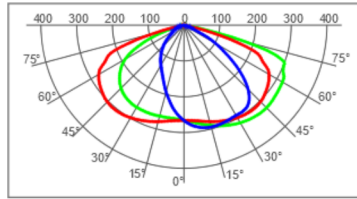
\* Initial delivered lumens at 25°C (77°F). Actual production yield may vary between -4 and +10% of initial delivered lumens



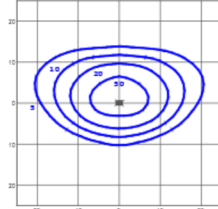
**Photometry**

All published luminaire photometric testing performed to IESNA LM-79-08 standards by an external laboratory. To obtain an IES file specific to your project consult: [www.creelighting-europe.com](http://www.creelighting-europe.com).

**275 - Type II short**



cd/klm  
 C10 C180 C80 C270 C15 C186



lux  
 CFL-B-275-D-40K\_150-R01602  
 Mounting Height: 8m

LUMEN OUTPUT - 275 Type II short	
Input Power Designator	4000K
	Initial Delivered Lumens*
C	14725
D	21233

\* Initial delivered lumens at 25°C (77°F). Actual production yield may vary between -4 and +10% of initial delivered lumens